

Thermal Imaging Analysis

With the fixture at steady-state temperature, a series of infrared (IR) imaging photographs were taken using a FLIR T300 to evaluate thermal dissipation and areas of concern on the light engine, heat sink, and external housing. The FLIR camera, when used in this way, gives primarily qualitative information. Without precise per-material emissivity calibration, the analysis will not provide exact correspondence to other temperature measurements. The emissivity was set to the default value of 0.95.

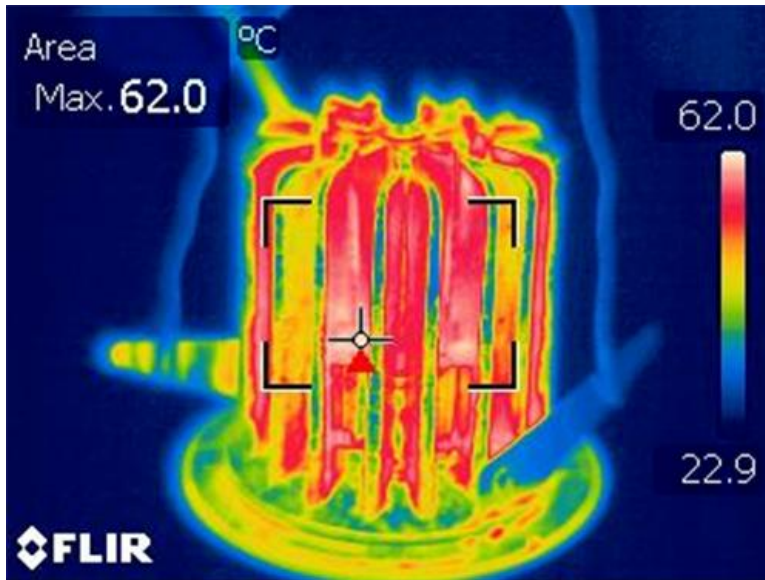


Figure 14: Thermal Image #1

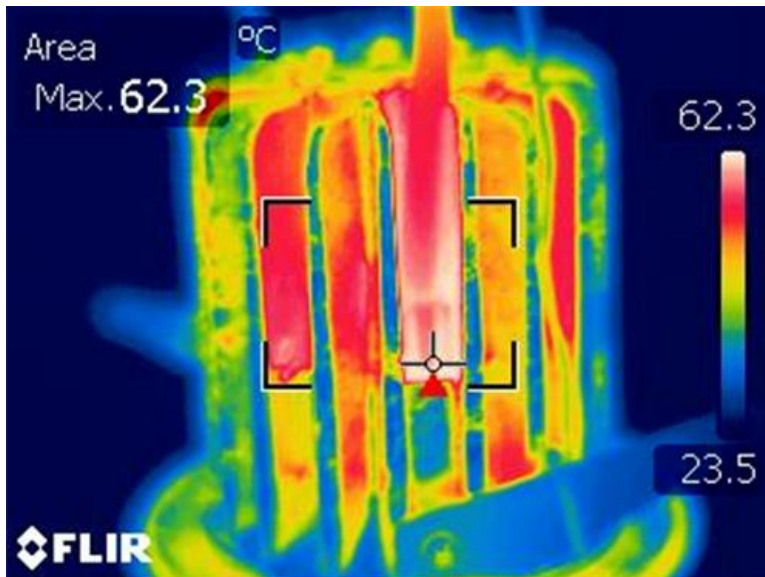


Figure 15: Thermal Image #2